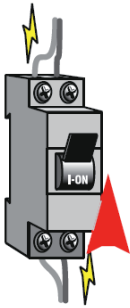
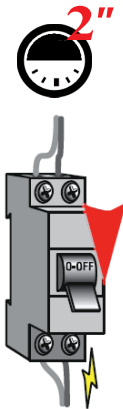


Borrado motores RTS-IO

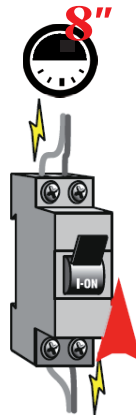
**MOTOR
CONECTADO**



**CORTAR CORRIENTE
2 SEGUNDOS**



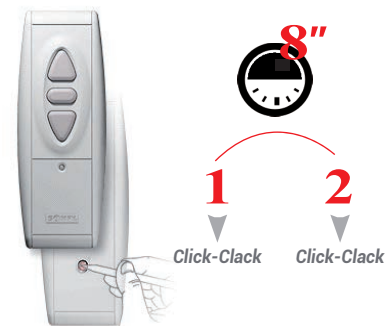
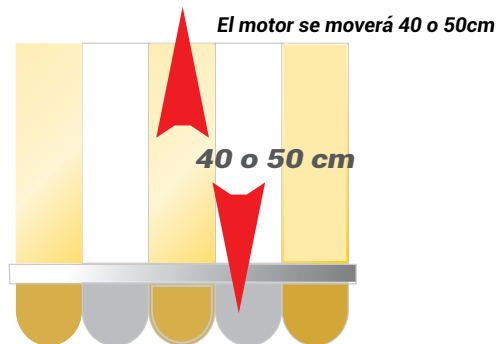
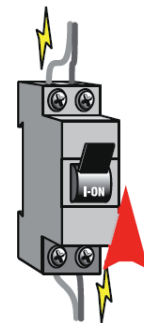
**CONECTAR CORRIENTE
8 SEGUNDOS**



**CORTAR CORRIENTE
2 SEGUNDOS**



**MOTOR
CONECTADO**



SIN DEJAR DE APRETAR ESPERAR AL 2 CLICK-CLACK