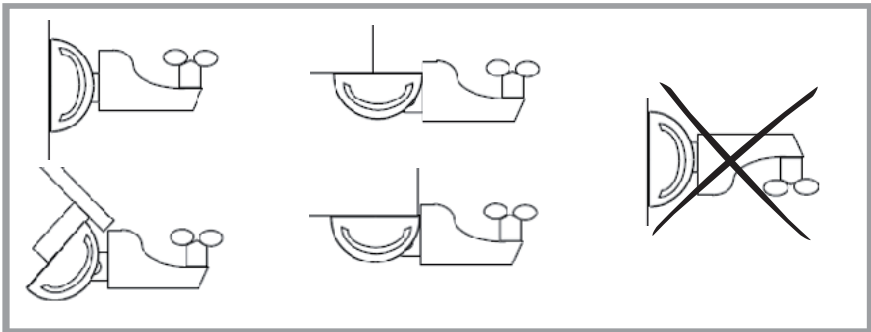


PROGRAMMATION EOLIS SENSOR IO



Installation



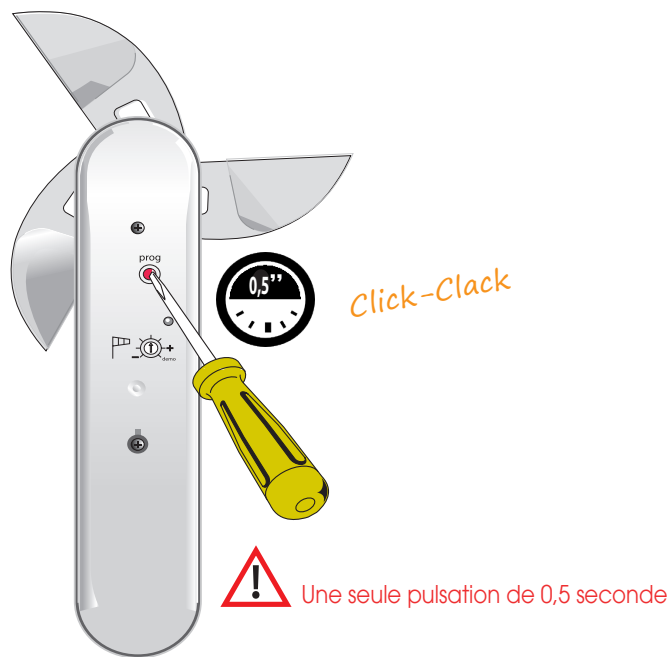
Ouvrir programmation

Appuyez sur le bouton derrière

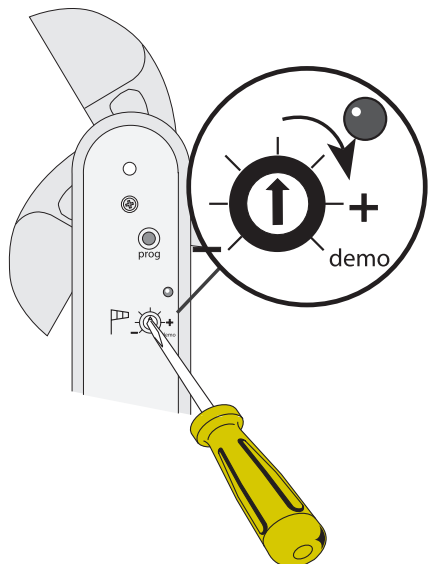


Fermer programmation Eolis Sensor IO

Appuyez sur le bouton Eolis Sensor IO



Reglage Eolis Sensor IO



Seuils	1	2	3	4	5	6
km/h	28	38	49	61	74	88
Nombre de flashes	1	2	3	4	5	6